



£499,000



## Bilmar, Dehus Lane, Vale

Perry's guide reference: 7 G3



- Detached Bungalow On Elevated Site
- Requiring Full Renovation
- 2 Sizeable Double Bedrooms
- Single Garage, Garden & Parking
- Located In Sought-After Position
- TRP 109

### Description

A detached bungalow requiring full renovation, positioned on an elevated site located within a quiet lane in the parish of Vale and with beautiful walks right on your doorstep.

The accommodation currently comprises two sizeable double bedrooms, a bathroom, lounge with elevated rural views, in addition to a separate kitchen/diner.

Externally, there is a good-size garden to the rear, a single garage and parking for two vehicles to the front.

A wonderful opportunity to acquire a property with space and potential to renovate and extend (subject to Planning permissions) in a sought-after location.











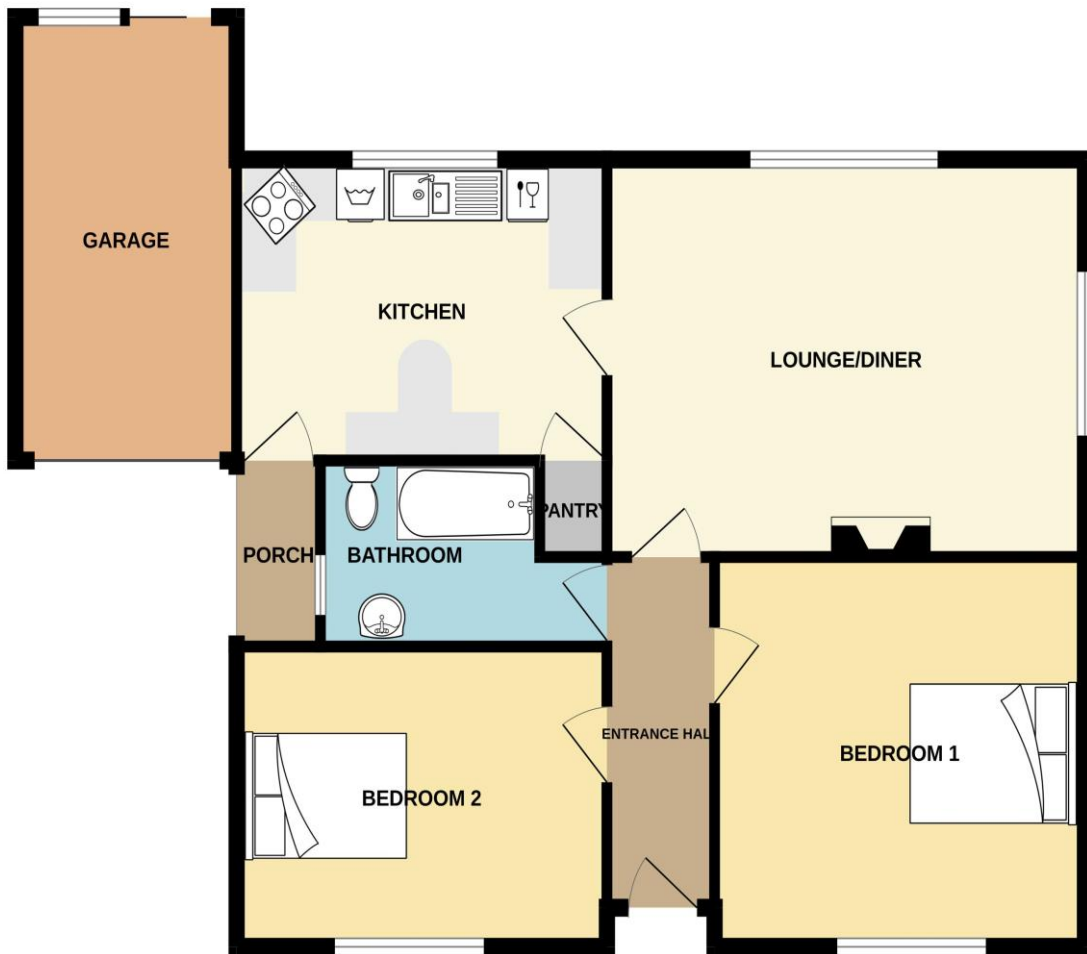








## GROUND FLOOR



### Inclusions

To include the fitted flooring and carpets, the curtains and blinds as hung and the light fittings.

Appliances include:

- Zanussi electric oven
- Hotpoint electric hob
- Integrated extractor fan
- Hotpoint washing machine
- Slim-line dishwasher

### Room Measurements

Entrance Hall	10' 8" x 3' 11" (3.25m x 1.19m)
Lounge	16' 9" x 14' 1" (5.11m x 4.28m)
Kitchen/Diner	14' 10" x 9' 9" (4.51m x 2.97m)
Pantry	3' 2" x 2' 6" (0.97m x 0.75m)
Bedroom 1	13' 5" x 11' 11" (4.10m x 3.64m)
Bedroom 2	13' 5" x 9' 11" (4.10m x 3.02m)
Bathroom	8' 1" x 6' 2" (2.46m x 1.88m)
EXTERIOR	
Garage	14' 8" x 8' 1" (4.47m x 2.46m)



### **Possession**

By Arrangement

### **Services**

Mains water and electricity. Cesspit drainage. uPVC double glazing.

The property is of single block construction.

Disclaimer: For clarification we wish to inform prospective purchasers/tenants that these particulars have been prepared as a general guide. They are not an offer of contract, nor part of one. You should not rely on the content therein or on statements, in writing or by word of mouth, provided by us in respect of the property, its condition or its value. We have not undertaken a detailed survey, not tested the services, appliances and specific fittings. Room sizes are approximate and should not be relied upon for carpets and furnishings. If the property is under refurbishment, some details are subject to change.